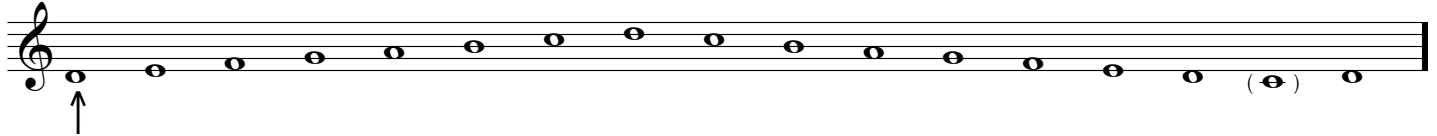


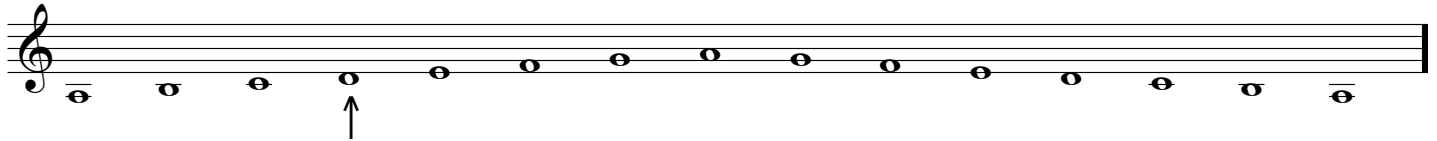
Medieval Church Modes for **DUMMIES**

(No sharps or flats)

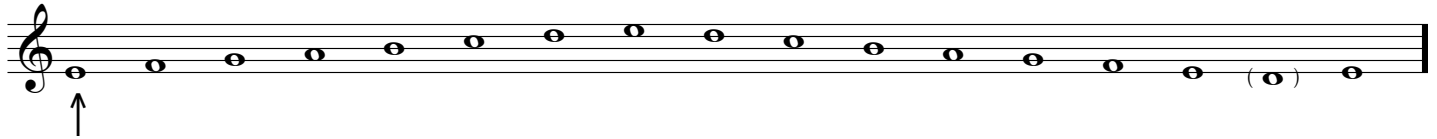
Mode 1: Authentic - Dorian (D)



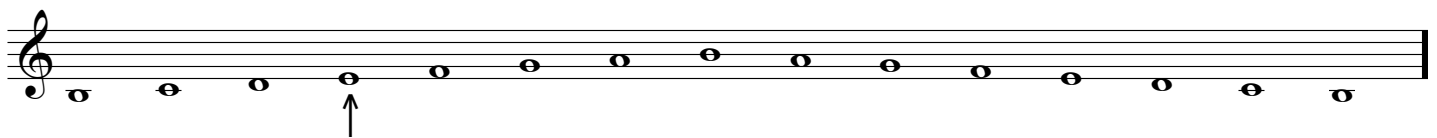
Mode 2: Plagal - Hypodorian (D)



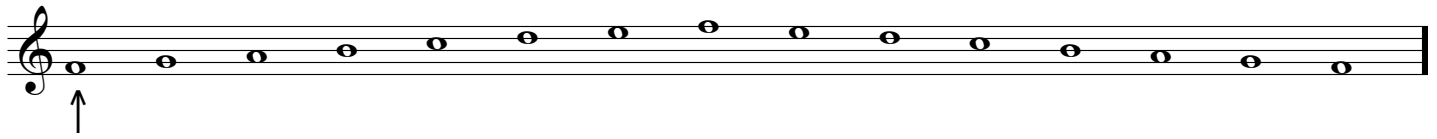
Mode 3: Authentic - Phrygian (E)



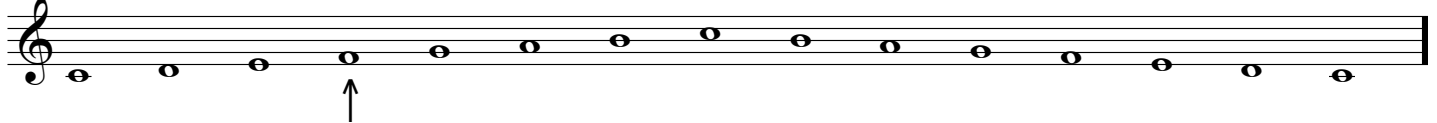
Mode 4: Plagal - Hypophrygian (E)



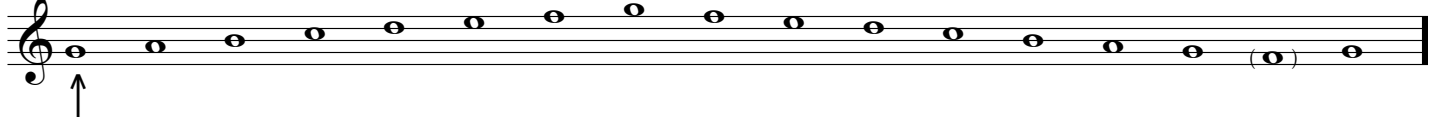
Mode 5: Authentic - Lydian (F)



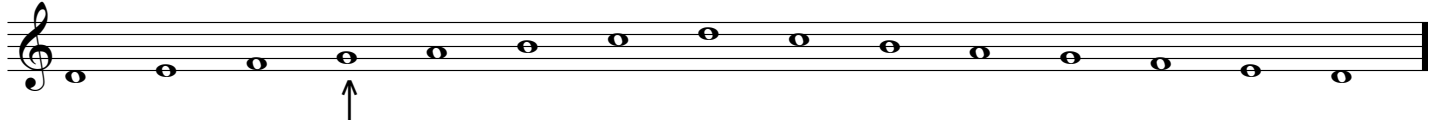
Mode 6: Plagal - Hypolydian (F)



Mode 7: Authentic - Mixolydian (G)



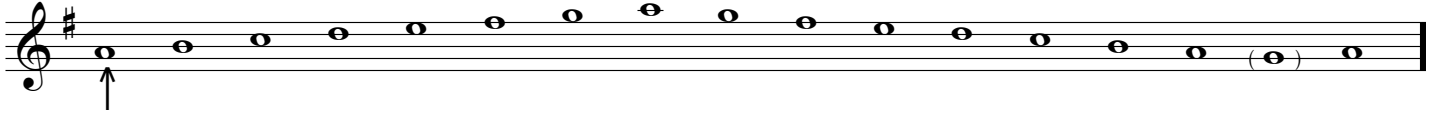
Mode 8: Plagal - Hypomixolydian (G)



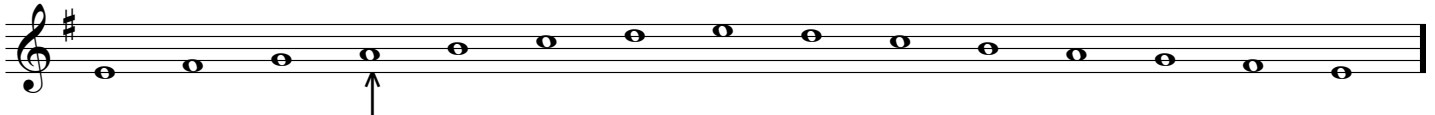
Medieval Church Modes for **DUMMIES**

(1 Sharp)

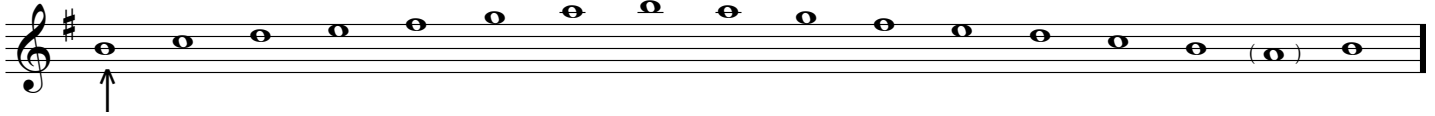
Mode 1: Authentic - Dorian (A)



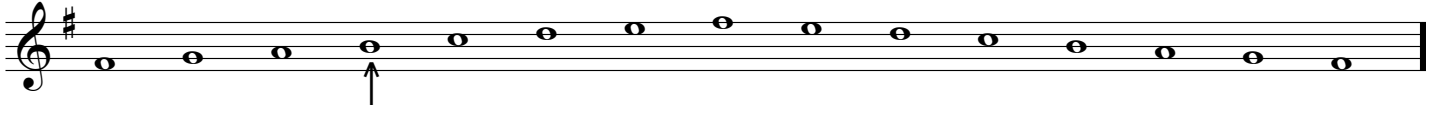
Mode 2: Plagal - Hypodorian (A)



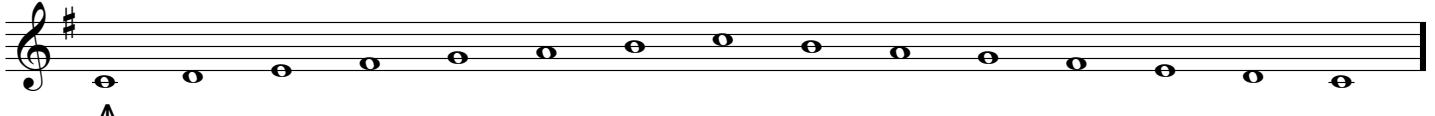
Mode 3: Authentic - Phrygian (B)



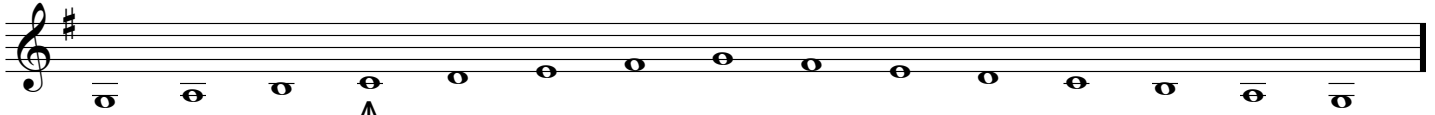
Mode 4: Plagal - Hypophrygian (B)



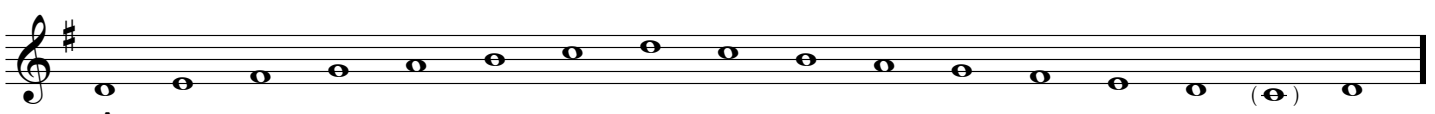
Mode 5: Authentic - Lydian (C)



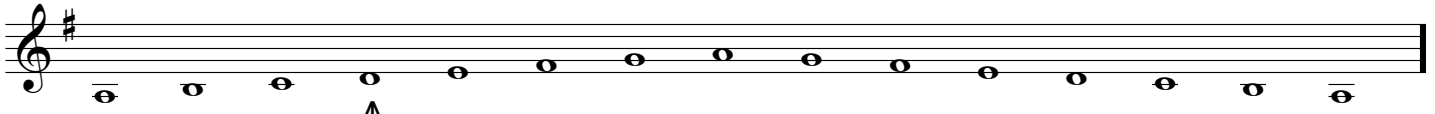
Mode 6: Plagal - Hypolydian (C)



Mode 7: Authentic - Mixolydian (D)



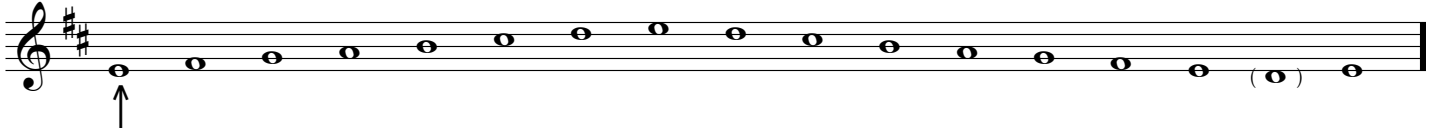
Mode 8: Plagal - Hypomixolydian (D)



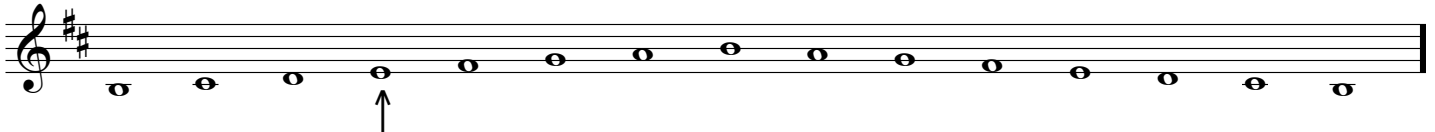
Medieval Church Modes for **DUMMIES**

(2 Sharps)

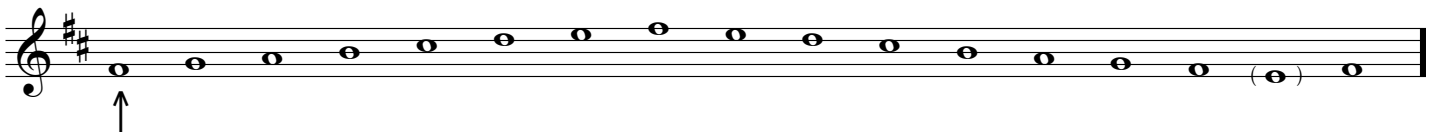
Mode 1: Authentic - Dorian (E)



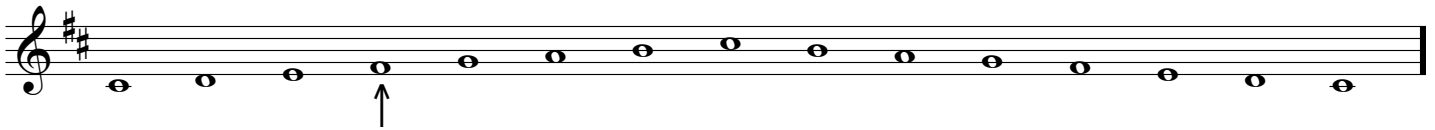
Mode 2: Plagal - Hypodorian (E)



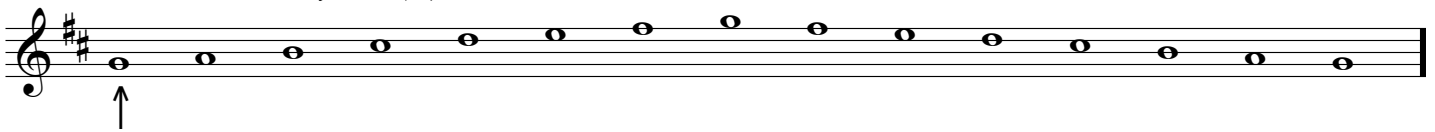
Mode 3: Authentic - Phrygian (F#)



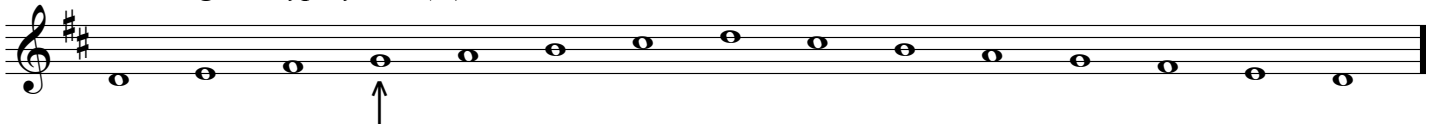
Mode 4: Plagal - Hypophrygian (F#)



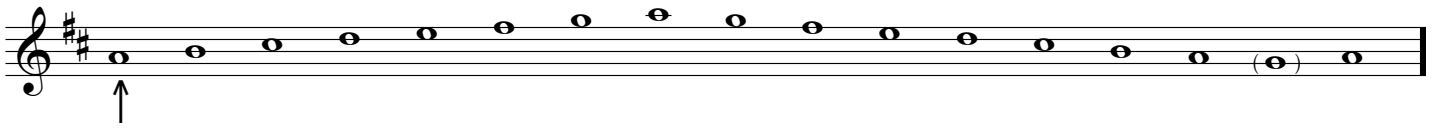
Mode 5: Authentic - Lydian (G)



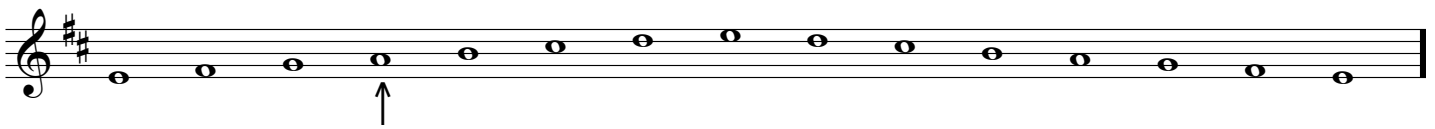
Mode 6: Plagal - Hypolydian (G)



Mode 7: Authentic - Mixolydian (A)



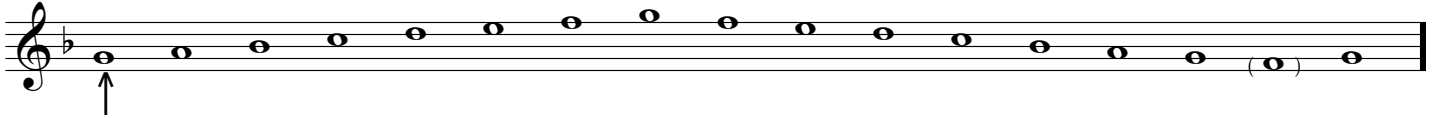
Mode 8: Plagal - Hypomixolydian (A)



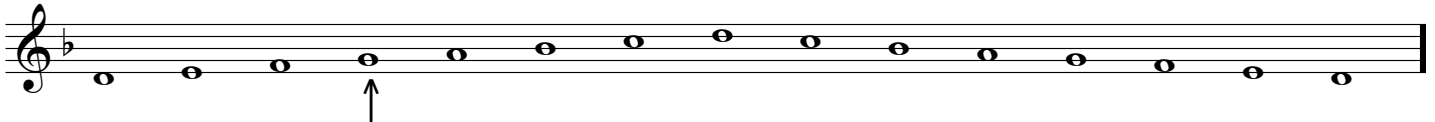
Medieval Church Modes for **DUMMIES**

(1 flat)

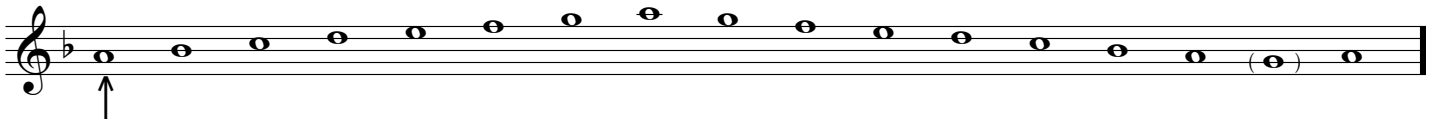
Mode 1: Authentic - Dorian (G)



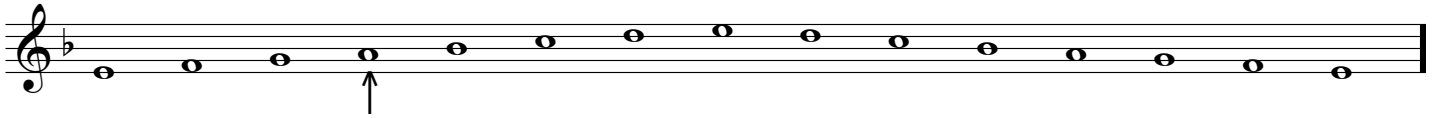
Mode 2: Plagal - Hypodorian (G)



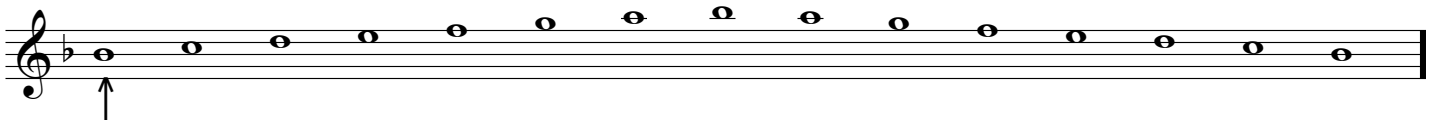
Mode 3: Authentic - Phrygian (A)



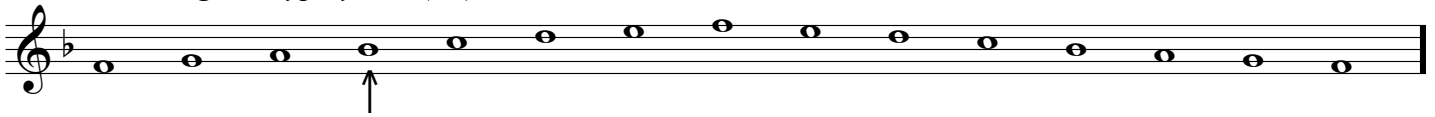
Mode 4: Plagal - Hypophrygian (A)



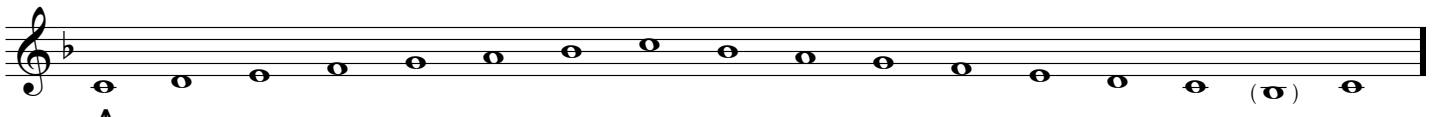
Mode 5: Authentic - Lydian (Bb)



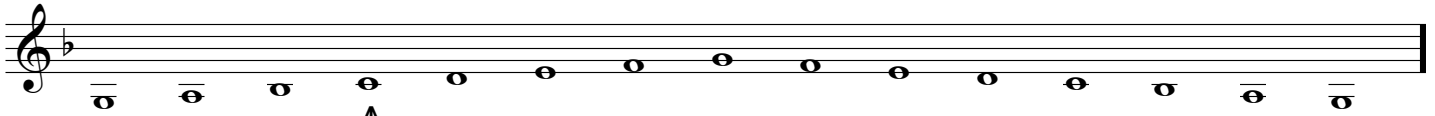
Mode 6: Plagal - Hypolydian (Bb)



Mode 7: Authentic - Mixolydian (C)



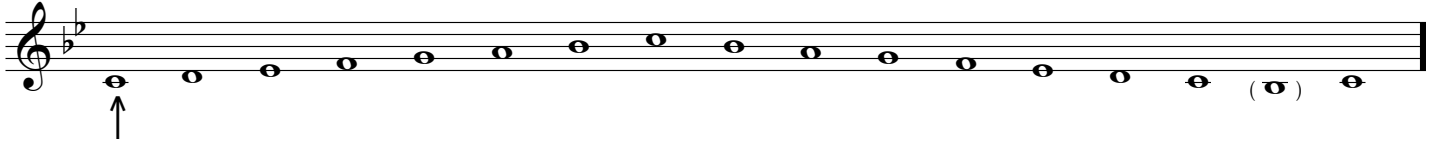
Mode 8: Plagal - Hypomixolydian (C)



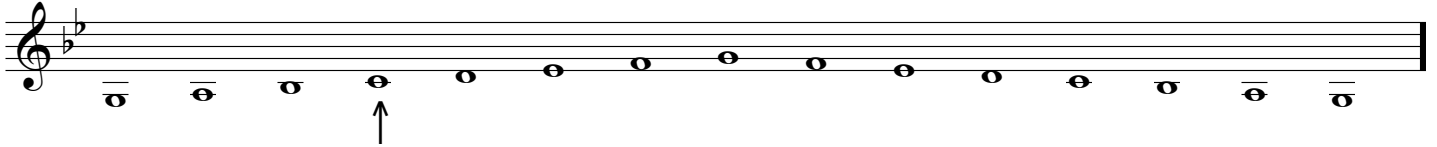
Medieval Church Modes for **DUMMIES**

(2 flats)

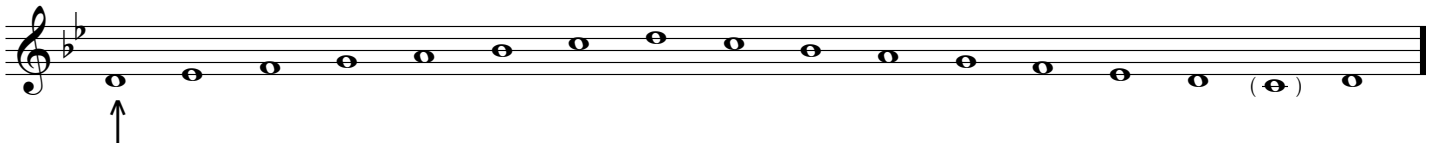
Mode 1: Authentic - Dorian (C)



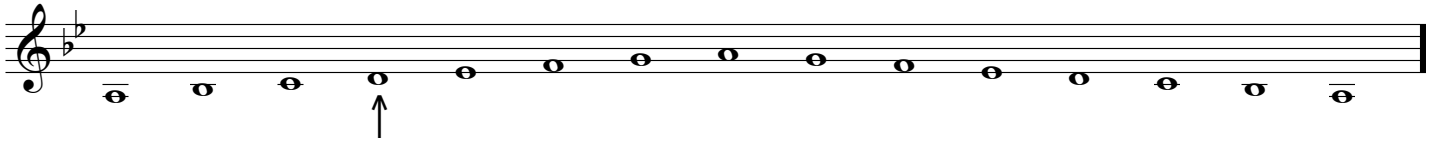
Mode 2: Plagal - Hypodorian (C)



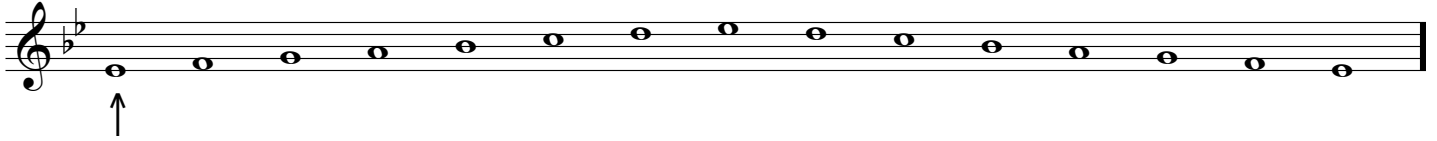
Mode 3: Authentic - Phrygian (D)



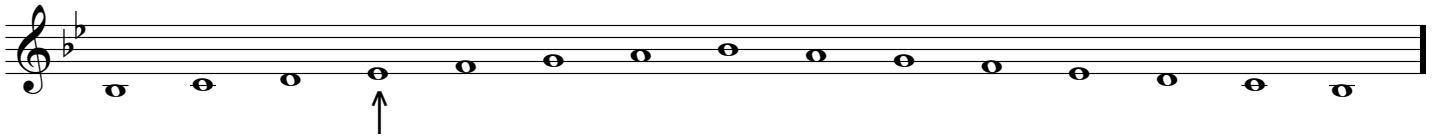
Mode 4: Plagal - Hypophrygian (D)



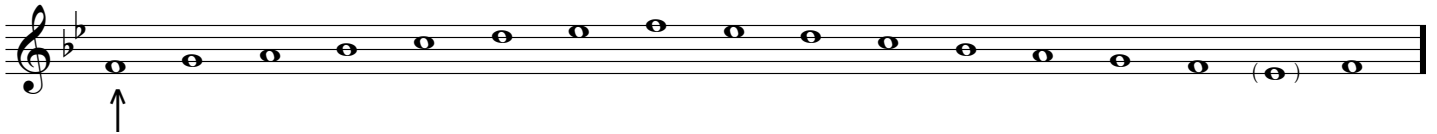
Mode 5: Authentic - Lydian (Eb)



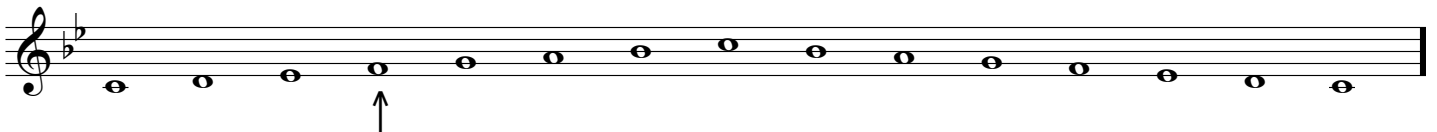
Mode 6: Plagal - Hypolydian (Eb)



Mode 7: Authentic - Mixolydian (F)



Mode 8: Plagal - Hypomixolydian (F)



Blank Page